



## The Blue Planet Insulated Battery box For cold weather installs.

Ph. 801-689-2618

C. 801-589-0447

Solar Contractor License: 6399860-5501 Elec. License: 154270-5502

2047 Painter Ln., West Haven, UT 84401

801-689-2618

# Insulated Battery Bank

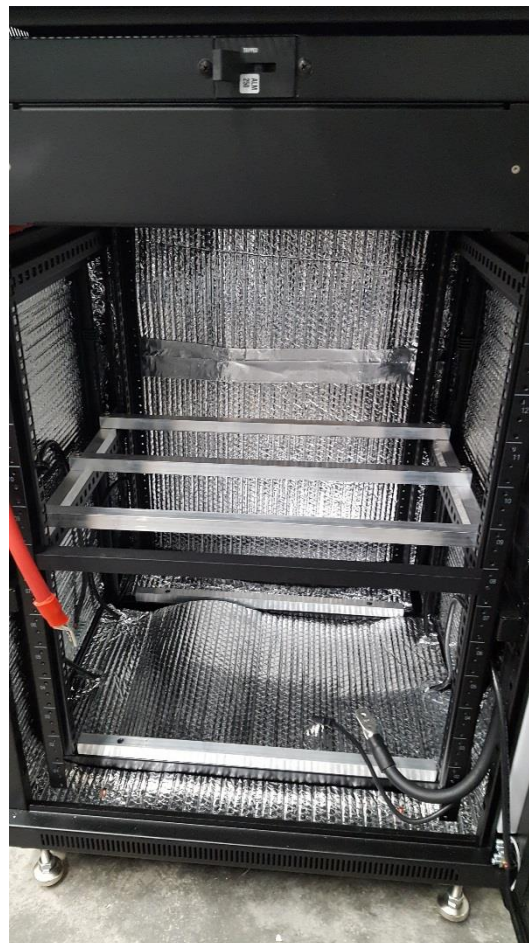
We picked up the Reflectix at Home Depot. The cardboard that ships beneath the Blue Ion Is a perfect cutting board.

**BLUE ION**  
TECHNOLOGY



## Insulated Battery Bank

The width was about perfect so we didn't need glue. We insulated all the side panels, the floor and roof of the box.



**BLUE ION**  
TECHNOLOGY



The foil is conductive so make sure it is no where near battery lugs or terminals. It can be taped and held in place where you want it.

2047 Painter Ln., West Haven, UT 84401  
P. 801.689.2618

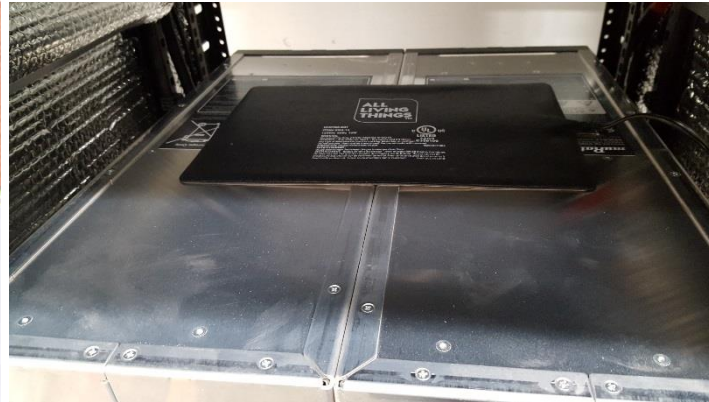
#031806-17





# Insulated Battery Bank

We slid in two batteries and then put one heat mat across the top of the first two batteries. Then we slid in the next two batteries so one heat mat is in between and servicing four batteries.



**BLUE ION**  
TECHNOLOGY



The mats come in 4, 8, 16, 24 and 50 watts. We used the 24 watt unit on the bottom set of four batteries and the 16 watt in between the top set of four batteries. Pictured above is the 16 watt mat. The 24 watt goes all the way across perfectly.

# Insulated Battery Bank

We picked up the Thermostatically Controlled Outlet at the local IFA farm ranch store.



**BLUE ION**  
TECHNOLOGY



We placed it in the top of the box as heat tends to rise. We plugged the mats into the cube and ran the extension cord out of the back of Blue Ion unit to the outlet. Make sure you have a good extension cord that will accept a three prong Thermo cube.

## Insulated Battery Bank

### RESULTS

Testing results seen currently are:  
Outdoor temperatures hit 7 degrees F.  
Indoor temp of 17 degrees F.  
The battery Cell temperatures are reading 65 degrees F.

**BLUE ION**  
TECHNOLOGY

